

THE LEADING B2B BEAUTY EVENT IN THE AMERICAS,  
DEDICATED TO ALL SECTORS OF THE INDUSTRY

**LAS VEGAS**  
MANDALAY BAY CONVENTION CENTER

**JULY 13 - 15, 2026**

**NEW DATE FORMAT**

COSMOPROF NORTH AMERICA  
COSMOPACK NORTH AMERICA

COSMOPROFNORTHAMERICA.COM/LAS-VEGAS



## EXHIBITOR BOOTH PACKAGES

Join Cosmoprof North America with ease, savings and a splash of promotion! These booth packages are designed to give exhibitors a seamless experience with added marketing to drive attendees to their booth. All packages include the opportunity to book hotels with our trusted partner, onPeak, which will provide you with the best nightly rates at favorable hotels throughout Las Vegas. Please click [here](#) to view all your options and book your stay!

### DIAMOND PACKAGE

**INCLUDES:**

- Ready Stand\*
- Digital Impact Displays
  - Showcase your brand on these large impact digital screens located in high-traffic areas within the show lobby. Your :08 spot will run in a 1.5 minute loop on 2 screens, all 3 days of the show.
- Gold Digital Package Upgrade in the Online Directory, includes these added features:
  - Featured Exhibitor placement
  - 2,000 character company description
  - Unlimited Products added to your Online Booth Profile
  - Unlimited Marketing Content added to your Online Booth Profile
  - Social Media Links
  - 75 Messages and Request Meetings

### STANDARD PRICING

	INLINE BOOTH	CORNER BOOTH
12 sqms	\$13,890	\$15,162
15 sqms	\$15,615	\$17,205
18 sqms	\$17,340	\$19,248
24 sqms	\$20,790	\$21,462

### LUXURY PACKAGE

**INCLUDES:**

- Ready Stand\*
- Lightbox located in the show lobby, displaying exclusive artwork provided by the exhibitor
- Gold Digital Package Upgrade in the Online Directory, includes these added features:
  - Featured Exhibitor placement
  - 2,000 character company description
  - Unlimited Products added to your Online Booth Profile
  - Unlimited Marketing Content added to your Online Booth Profile
  - Social Media Links
  - 75 Messages and Request Meetings
- Company logo printed in onsite Show Directory
- Promotion on a digital board on show floor with all Luxury, Elite, Prestige and Chic Package participants
  - Includes logo and/or company name and booth number

### STANDARD PRICING

	INLINE BOOTH	CORNER BOOTH
12 sqms	\$13,670	\$14,942
15 sqms	\$15,395	\$16,985
18 sqms	\$17,120	\$19,028
24 sqms	\$20,570	\$21,242

\*Ready Stand in package options include all components included in the Ready Stand Exhibit Space.

**THE LEADING B2B BEAUTY EVENT IN THE AMERICAS,  
DEDICATED TO ALL SECTORS OF THE INDUSTRY**

**LAS VEGAS**  
MANDALAY BAY CONVENTION CENTER

**JULY 13 – 15, 2026**

**NEW DATE FORMAT**

**COSMOPROF** NORTH AMERICA  
**COSMOPACK** NORTH AMERICA

[COSMOPROFNORTHAMERICA.COM/LAS-VEGAS](http://COSMOPROFNORTHAMERICA.COM/LAS-VEGAS)



**ELITE PACKAGE**

**INCLUDES:**

- Ready Stand\*
- Product Showcase Sponsorship
  - One museum-style display case with lights. Product(s) must fit within a 3/4M w x 1/2M h x 1/2M d space.
  - Signage on showcase with company name, logo and booth number
  - ID sign in showcase with product name and description, and QR Code that will connect to your preferred URL
  - Inclusion on signage in a high-traffic area of the show, featuring all participants with company name or logo and booth number
- Gold Digital Package Upgrade in the Online Directory, includes these added features:
  - Featured Exhibitor placement
  - 2,000 character company description
  - Unlimited Products added to your Online Booth Profile
  - Unlimited Marketing Content added to your Online Booth Profile
  - Social Media Links
  - 75 Messages and Request Meetings
- Company logo printed in onsite Show Directory
- Promotion on a digital board on show floor with all Luxury, Elite, Prestige and Chic Package participants
  - Includes logo and/or company name and booth number

STANDARD PRICING		
	INLINE BOOTH	CORNER BOOTH
12 sqms	\$11,005	\$12,277
15 sqms	\$12,730	\$14,320
18 sqms	\$14,455	\$16,363
24 sqms	\$17,905	\$18,577

**PRESTIGE PACKAGE**

**INCLUDES:**

- Ready Stand\*
- Silver Digital Package Upgrade in the Online Directory, includes these added features:
  - 1,000 character company description
  - Up to 5 Products added to your Online Booth Profile
  - Up to 3 pieces of Marketing Content added to your Online Booth Profile
  - Social Media Links
  - 50 Messages and Request Meetings
- Company logo printed in onsite Show Directory
- Promotion on a digital board on show floor with all Luxury, Elite, Prestige and Chic Package participants
  - Includes logo and/or company name and booth number

STANDARD PRICING		
	INLINE BOOTH	CORNER BOOTH
12 sqms	\$8,755	\$10,027
15 sqms	\$10,480	\$12,070
18 sqms	\$12,205	\$14,113
24 sqms	\$15,655	\$16,327

\*Ready Stand in package options include all components included in the Ready Stand Exhibit Space.

THE LEADING B2B BEAUTY EVENT IN THE AMERICAS,  
DEDICATED TO ALL SECTORS OF THE INDUSTRY

**LAS VEGAS**  
MANDALAY BAY CONVENTION CENTER

**JULY 13 - 15, 2026**

**NEW DATE FORMAT**

COSMOPROF NORTH AMERICA  
COSMOPACK NORTH AMERICA

[COSMOPROFNORTHAMERICA.COM/LAS-VEGAS](http://COSMOPROFNORTHAMERICA.COM/LAS-VEGAS)



**CHIC PACKAGE**

**INCLUDES:**

- Ready Stand\*
- Silver Digital Package Upgrade in the Online Directory, includes these added features:
  - 1,000 character company description
  - Up to 5 Products added to your Online Booth Profile
  - Up to 3 pieces of Marketing Content added to your Online Booth Profile
  - Social Media Links
  - 50 Messages and Request Meetings
- Bold company listing in onsite Show Directory
- Promotion on a digital board on show floor with all Luxury, Elite, Prestige and Chic Package participants
  - Includes logo and/or company name and booth number

**CLASSIC PACKAGE**

**INCLUDES:**

- Ready Stand\*
- Silver Digital Package Upgrade in the Online Directory, includes these added features:
  - 1,000 character company description
  - Up to 5 Products added to your Online Booth Profile
  - Up to 3 pieces of Marketing Content added to your Online Booth Profile
  - Social Media Links
  - 50 Messages and Request Meetings
- Meterboard located in a high traffic area with all Classic Package participants, including company name and booth number

**STANDARD PRICING**

	INLINE BOOTH	CORNER BOOTH
12 sqms	\$8,530	\$9,802
15 sqms	\$10,255	\$11,845
18 sqms	\$11,980	\$13,888
24 sqms	\$15,430	\$16,102

**STANDARD PRICING**

	INLINE BOOTH	CORNER BOOTH
12 sqms	\$7,900	\$9,172
15 sqms	\$9,625	\$11,215
18 sqms	\$11,350	\$13,258
24 sqms	\$14,800	\$15,472

\*Ready Stand in package options include all components included in the Ready Stand Exhibit Space.

THE LEADING B2B BEAUTY EVENT IN THE AMERICAS,  
DEDICATED TO ALL SECTORS OF THE INDUSTRY

**LAS VEGAS**  
MANDALAY BAY CONVENTION CENTER

**JULY 13 - 15, 2026**

**NEW DATE FORMAT**

COSMOPROF NORTH AMERICA  
COSMOPACK NORTH AMERICA

COSMOPROFNORTHAMERICA.COM/LAS-VEGAS



## EXHIBITOR SPACE OPTIONS

### READY STAND

**INCLUDES:**

- Carpet (Pepper)
- White double fabric panel walls (8' high)
- (1) 500 Watt outlet
- (1) Rectangular table, 30"H x 42"W x 30"D
- (4) Clear chairs
- (1) Freestanding shelf unit (4 shelves), 72"H x 54"W x 14"D
- Track lighting with 3 adjustable heads
- Fascia board with company name
- 1/2 meter graphic on front panel of booth
- (1) Wastebasket
- First day of show cleaning

**PLEASE NOTE:**

- Ready Stand rental items are subject to applicable sales tax
- Square foot measurements are rounded approximations

### STANDARD PRICING

SIZE	PRICE	STARTING COST
<b>INLINE BOOTH</b>		
12 to 36 sqm (129 to 387 sqft)	\$575	12 sqm \$575/sqm = \$6,900
<b>CORNER BOOTH</b>		
12 to 23 sqm (129 to 247 sqft)	\$681	12 sqm \$681/sqm = \$8,172
24 to 36 sqm (258 to 387 sqft)	\$603	



THE LEADING B2B BEAUTY EVENT IN THE AMERICAS,  
DEDICATED TO ALL SECTORS OF THE INDUSTRY

**LAS VEGAS**  
MANDALAY BAY CONVENTION CENTER

**JULY 13 - 15, 2026**

**NEW DATE FORMAT**

COSMOPROF NORTH AMERICA  
COSMOPACK NORTH AMERICA

[COSMOPROFNORTHAMERICA.COM/LAS-VEGAS](http://COSMOPROFNORTHAMERICA.COM/LAS-VEGAS)



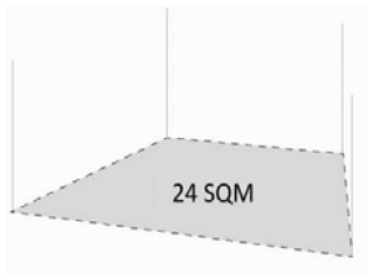
**RAW SPACE**

**INCLUDES:**

- Concrete floor space only (no furnishings or walls)
- Exhibitor is responsible for finished back wall that is 8 feet/2,4 meters tall and side wall(s) if space is a corner or inline
- Exhibitor is responsible for mandatory floor covering/ carpet
- Space can be increased by individual square meters at a minimum of 1x3 meters
- Carpet & wall panels can be ordered through GES

**PLEASE NOTE:**

- Square foot measurements are rounded approximations



STANDARD PRICING		
SIZE	PRICE	STARTING COST
<b>INLINE BOOTH</b>		
24 to 71 sqm (258 to 764 sqft)	\$417	24 sqm \$417/sqm = \$10,008
72 & larger sqm (775 & larger sqft)	\$389	
<b>CORNER BOOTH</b>		
24 to 71 sqm (258 to 764 sqft)	\$437	24 sqm \$437/sqm = \$10,48
<b>PENINSULA BOOTH</b>		
36 to 71 sqm (388 to 764 sqft)	\$445	36 sqm \$445/sqm = \$16,020
72 & larger (775 & larger)	\$405	
<b>ISLAND BOOTH</b>		
48 to 71 sqm (517 to 764 sqft)	\$456	48 sqm \$456/sqm = \$21,888
72 to 111 sqm (775 to 1,195 sqft)	\$412	
112 to 135 sqm (1,205 to 1,453 sqft)	\$394	
136 & larger sqm (1,463 & larger sqft)	\$376	